



# Albury Wodonga Regional FoodShare

## *Partnership Opportunities*



*Solving hunger,  
together.*



*“Despite all the challenges, our goal remains clear. No one in our community should have to go hungry. Building hope for the future starts with ending hunger today.”*

## Acknowledgement

Albury Wodonga Regional FoodShare would like to acknowledge the traditional custodians of the lands on which we work and pay our respect to elders past, present and future.

We recognise the land on which we stand has never been ceded and we thank the traditional custodians for allowing us to work, live and share this sacred space.



## Food Insecurity

The number of people in our region going hungry is continuing to rise. As cost-of-living pressures remain, so too will food insecurity.

### Our Purpose

FoodShare is here to respond to the needs of people experiencing food insecurity and hunger across our local communities. We ensure access to an effective, stable and sustainable food relief network.

### Our Vision

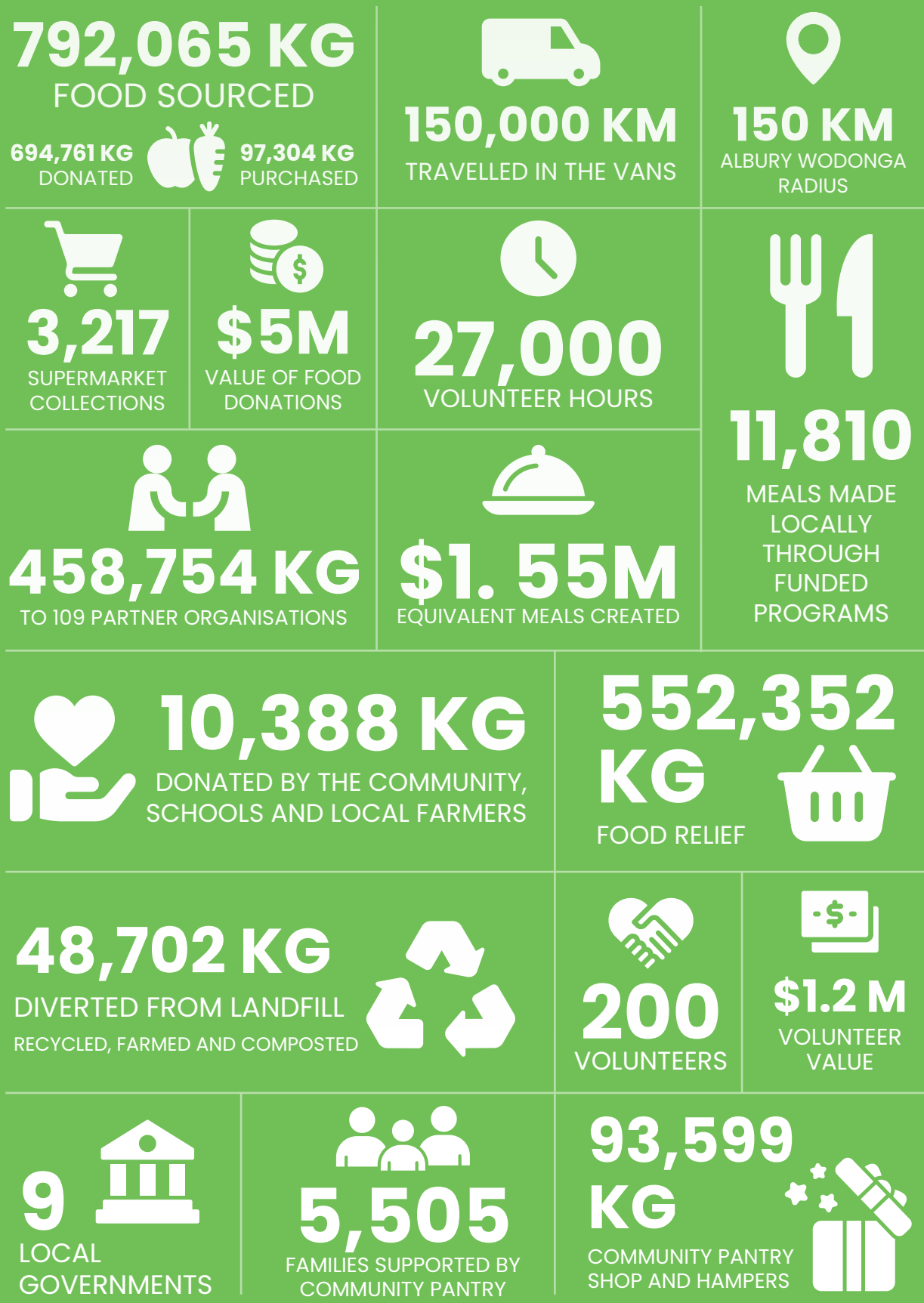
No one in our local communities goes hungry.

### Our Mission

To reduce food insecurity by ensuring:

- Stability, efficiency and sustainability of food supply
- Accessibility and connectivity to food relief services
- Visibility and understanding of food insecurity and relief
- The legitimacy of FoodShare in leading and supporting those working to address food insecurity

# Our Impact





“  
*I couldn't do without FoodShare. I was stretching out my food over the days before I get paid again, but now I can eat healthy food and the money I save on groceries allows me to pay other bills.*”

## Our Work

### Essential Food Relief

#### *Partner Agencies*

FoodShare operates as a regional hub to supply food to over 100 local charities, schools and relief agencies. On average our warehouse fulfills around 80 bulk food orders per week to organisations that distribute food relief to individuals and families.

### Pathways out of food insecurity

#### *Community Pantry*

FoodShare's Community Pantry is a social supermarket that enables people experiencing financial hardship to access grocery items from a wide choice including healthy fresh food, pantry staples, personal hygiene and general household items.

Since introducing the program, families shopping at the Community Pantry have grown to over 500 per month. The total kilograms of food distributed from this program in the last year alone leaped to 93,599 kilograms, which benefited more than 5,505 families.

Vouchers are needed to access FoodShare's Community Pantry program and are available through partnering agencies.

### Sustainability

#### *Feed More Waste Less*

Opportunities created by this exciting initiative are increasing FoodShare's capabilities to rescue and recycle larger volumes of food. Previously, most food waste was dispatched to traditional livestock, small holdings and broadacre farmers. However, the **Feed More, Waste Less** project has unearthed several new ways to divert and manage waste, including transferring non-edible food to worm farms and recycling facilities.

### Children's Nutrition

#### *Feed Our Kids*

All children must start their morning with a healthy breakfast. Without wholesome food to fuel their day, they cannot focus well at school or elsewhere, limiting life's opportunities.

Without FoodShare many schools would not be able to run their breakfast programs, which not only provide much needed food for students but also opportunities to connect and offer additional support services for these families

# Community Events

## Border Easter Egg Hunt

One of FoodShare's major annual fundraising events is the Border Easter Egg Hunt. The community event regularly attracts crowds in excess of 2,000 people, with up to 850 children participating in the Easter Egg hunts.



## With your support, FoodShare can continue to...

- Redistribute food from major food suppliers into manageable quantities and appropriate formats for our partner agencies
- Provide emergency food relief in times of natural disasters, pandemics and industry transitions (such as closing of a major employer)
- Source locally grown and produced food
- Rescue food and reduce food waste going to landfill
- Act as a local voice to advocate for systems change to solve food insecurity

## Partnership Opportunities

FoodShare operates with limited Government grants, and relies on the support of our business community, philanthropy and community fundraising to cover essential operating costs.

We are eternally grateful for the generosity of local businesses and organisations who continue to support our work. We are excited to offer new opportunities to help impact the challenge of local food insecurity.



## Friends of FoodShare

Become a **Friends of FoodShare** partner. There are a host of wonderful recognition and participation opportunities, in addition to knowing your business or organisation is helping to solve hunger in our community.

We offer a range of benefits at each partnership level and would welcome the opportunity to discuss these with you.

## Project Partnerships

### Community Pantry Vouchers

Providing a family or individual with a Community Pantry voucher can kickstart a pathway out of food insecurity. We distribute vouchers to people via schools, partner agencies and community organisations.

### Feed Our Kids School Breakfast Program

**Feed Our Kids** provides food to schools to run their school breakfast programs. Supplying a nutritious breakfast allows children to concentrate during their school day.

## Event Partnerships

Showcase your organisation or business at one of FoodShare's community events.

# FoodShare Appeals

Twice a year Foodshare holds an appeal. We ask for community help to fund food for people in need. All donations to our appeals are tax deductible and help support our increased food costs at critical times of high demand.

- Winter Hunger Relief Appeal (June and July)
- Christmas Hunger Relief Appeal (November and December)

For more information or to discuss partnership opportunities, please contact our partnerships team.

[partnerships@foodshare.org.au](mailto:partnerships@foodshare.org.au)

02 6059 5555





**Albury Wodonga Regional FoodShare**

1/10 Stead St, West Wodonga VIC 3690

PO Box 393, Wodonga VIC 3689

[foodshare.org.au](http://foodshare.org.au)

[partnerships@foodshare.org.au](mailto:partnerships@foodshare.org.au)

02 6059 5555