



# ANNUAL REPORT 2020

WE RESCUE FOOD, SHARE FOOD AND EMPOWER PEOPLE, SO THAT NO-ONE GOES HUNGRY IN OUR REGION

# ALBURY WODONGA REGIONAL FOODSHARE ANNUAL REPORT 2020

## INDEX

<b>Made Stronger Through Adversity</b>	<b>3</b>
<b>An Unparalleled Year ... Repositioning Regional Food Relief</b>	<b>5</b>
Black Summer Bushfires	
Warehouse Relocation	
Covid-19	
Recognising Victoria's Regional Emergency Food Services	
<b>Snapshot</b>	<b>11</b>
Why We Exist   Making a Difference   Geographical Reach – 150km radius	
Food Sharing Reach   Cross Border Service & No Weekend Access	
Service Efficiency   Workforce	
Funding   Eligibility   Victorian Govt Support   Fundraising	
Increased Demand & More Agencies   Increased Supply & More Donors	
Reduction in Landfill	
2014-2020 Comparison	
<b>Major Partners &amp; Stakeholders</b>	<b>18</b>
<b>Amazing People</b>	<b>25</b>
Team   Volunteers   Staff   Board	
<b>Community Pantry</b>	<b>29</b>
<b>Fundraising</b>	<b>30</b>
<b>Governance</b>	<b>31</b>
<b>Finance</b>	<b>32</b>
Financial Statements	
<b>Vision Mission Values Goals</b>	<b>43</b>

# ALBURY WODONGA REGIONAL FOODSHARE ANNUAL REPORT 2020

## MADE STRONGER THROUGH ADVERSITY


2020 was a year that presented extraordinary challenges for FoodShare, but we weren't the only ones impacted.

Many in our local community, others across the state and the rest of Australia all grappled with first the bushfires and then Covid-19 pandemic.

Through the efforts of our FoodShare staff and volunteers, colleagues on the Board and the generous contributions of our community and the Victorian Government, we have managed to emerge from 2020 in a stronger and more confident position than ever before.

Fire-ravaged townships and global health crisis aside, another huge activity tested volunteers and staff during the summer and autumn of 2020: we moved our warehouse and office from a Wodonga TAFE facility to Stead Street West Wodonga. Logistically it was very challenging. It took more than 10 days and hundreds of volunteer hours to move equipment and stock.

Without such a staunch team we would not have relocated or reestablished as quickly, nor as successfully. We must thank two volunteers in particular, who gave their all during this period: Doug Gammon and Bev Campbell. They assisted in the planning and layout (and considerably more) of the new warehouse that ensured it was an efficient and workable set up.



**“It is nice to see the work that people like you do. After just getting out today from Tumbarumba, after being evacuated yesterday,**

**I can definitely see how the people in these affected areas would greatly appreciate these donations.”**

Wendy Terrill.

# ALBURY WODONGA REGIONAL FOODSHARE ANNUAL REPORT 2020

## MADE STRONGER THROUGH ADVERSITY

FoodShare has 110 plus volunteers. Volunteers are vital to a community not-for-profit organisation such as ours. They are selfless and motivated to help their fellow residents. They give of their time freely, bolster staff, build connection and camaraderie, whilst at times boosting morale. FoodShare could not function without them: we acknowledge and sincerely salute them for their dedication.

We also thank our outstanding staff and consultants: Katrina Pawley (Fundraising Coordinator), Sue Thornton (Administration and Volunteer Coordinator), Nicole Eirth (Community Pantry Coordinator), Pam Townsend (Bookkeeper), Fiona Livermore and James Walsh (Findex Group) for their support and commitment.

Lastly, we recognise our board members: Michael Curtin (Deputy Chair), Kath Dalton (Secretary), Kevin Rocks (Treasurer), Jodie Kensington, Stephen Carroll, Kate Wheller and Di Glen. They work with a clear, unrelenting focus addressing a growing social and moral problem ... vulnerable people living with food insecurity.



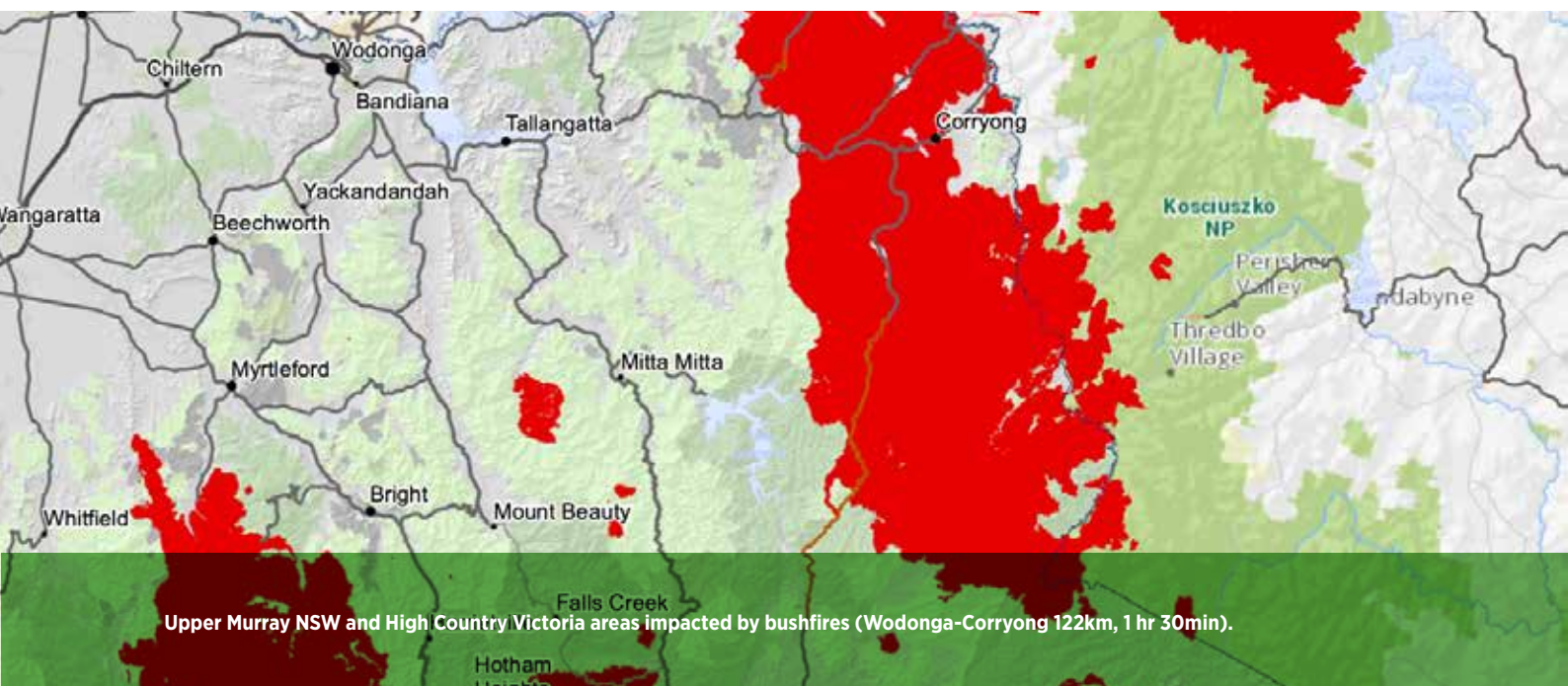
**Peter Matthews**  
Manager



**Simon Welsh**  
Chair

## AN UNPARALLELED YEAR ... REPOSITIONING REGIONAL FOOD RELIEF

### Black Summer Bushfires



On 30 December 2019, ferocious bushfires unleashed on both sides of the Murray River to the east of Wodonga. By 2 January 2020, a state of disaster had been declared as entire communities fought for survival. Amidst the heartbreaking destruction, another community sprang into action.

FoodShare acted as the central distribution and logistics hub for sourcing, receiving and assigning donated food in the ravaged regions so close by.

Wodonga TAFE made additional warehouse space available, and we needed it. Over the first few weeks of 2020 we received around 170 tonnes of food, water and other essential goods. Local residents, and those from further afield, lined up in their cars outside the warehouse to give whatever they could.

At the height of the bushfire emergency, the communities in the Towong Shire (Victoria), and the Snowy Valleys Shire (NSW) were the hardest hit by the disaster. FoodShare sent trucks and trailer loads of food to NSW towns including Wagga Wagga, Holbrook, Batlow and Jingellic. In Victoria we supplied all towns and regions in Towong, Alpine and Wangaratta local government areas with critically needed supplies.

# ALBURY WODONGA REGIONAL FOODSHARE ANNUAL REPORT 2020

## AN UNPARALLELED YEAR ... REPOSITIONING REGIONAL FOOD RELIEF

### Black Summer Bushfires

The depth and breadth of donations pledged as services, products or in-kind, was staggering in its generosity and scale.

Seventeen trucking companies volunteered drivers and vehicles to deliver food into the fire ground and relief centres. Our vehicles were also deployed for these tasks.

Wodonga TAFE staff members Alan Skinner, Peter Bluck and Paul Kennelly voluntarily manned the forklifts and managed the loading and unloading of these trucks, for seven consecutive days during their summer break. They also continued to help through January and February. Without their support we could not have managed all these truck movements.



Community donations for bushfire affected communities

Hertz Truck Rental provided vehicles at no cost during the peak demand period. At times we had multiple Hertz vehicles on the road at the same time. The company offered FoodShare free rental of trucks and utes for the whole of 2020. The value of this donation exceeded \$20,000! It was a magnificent response from Hertz and the Jacob family. (For a full list of partners and stakeholder, see pages 9-24.)

We know that the impacts of these fires didn't end when the last ember was extinguished in Autumn 2021. Families, farmers, children, employers, townships.... they still live with the material and psychological blows.

# ALBURY WODONGA REGIONAL FOODSHARE ANNUAL REPORT 2020

## AN UNPARALLELED YEAR ... REPOSITIONING REGIONAL FOOD RELIEF

### Black Summer Bushfires

Through the first half of 2020, we continued to supply emergency food into affected communities at a rate almost 40% greater than need demanded before the fires.

In June, we were allocated \$100,000 from the Victorian Government and Bendigo Bank Bushfire Appeal Fund. This injection maintained the supply of emergency food to the Upper Murray and Alpine/High Country areas nearby.



Andrew Harrison, General Manager, 1494 2AY Ace Radio Network during bushfire response.



### Warehouse Relocation

During this unprecedented and sustained pressure on FoodShare's resources over the summer, the lease on Wodonga TAFE's 800m<sup>2</sup> warehouse came to an end. TAFE had given a lengthy notice period in light of its need to repurpose the space due to an increase in demand for trade training. After an extensive 18 month search we began transitioning from Moorefield Park Drive to a building three kilometres further west in late February 2020.

# ALBURY WODONGA REGIONAL FOODSHARE ANNUAL REPORT 2020

## AN UNPARALLELED YEAR ... REPOSITIONING REGIONAL FOOD RELIEF

### Warehouse Relocation



It was a huge effort to relocate the warehouse and we thank Superior Forklift Services for disassembling the pallet racking at the TAFE warehouse and reassembling the shelving at the new facility. Superior completed the exercise in just two days! Likewise, O'Connell's Refrigeration and Airconditioning deconstructed the cool room and rebuilt it at Stead Street. Staff also assisted in the relocation of our walk-in freezer. Both local businesses provided these services at a fraction of the real cost, as a gesture of support for FoodShare.

TAFE staff gave generously to help load the trucks that transported equipment, stock and other materials between the two premises.

FoodShare was a tenant in a TAFE facility from 2013-2020. We continue to work collaboratively, including scoping a purpose built warehouse to aid a sustainable business model and long term future.



FoodShare helped distribute hampers to different cultural groups over Christmas. The project was orchestrated by Albury Wodonga Multicultural Community Events, assisted by the Punya Foundation.

# ALBURY WODONGA REGIONAL FOODSHARE ANNUAL REPORT 2020

## AN UNPARALLELED YEAR ... REPOSITIONING REGIONAL FOOD RELIEF

### COVID-19

We were still grappling with the bushfire emergency when stories of a mystery new virus began to appear in the news. By March, we were in a national lockdown. This brought not only immediate operational challenges concerning service continuity and setting up safe working environments, but a further increase in demand for emergency food at a time when capacity to meet the need was already stretched.

As local relief agencies struggled to maintain their workforces, the Border and North East Victoria faced a possible food crisis.

We were pleased to play a role - along with other agencies and Member for Albury Justin Clancy (MP) - in coordinating efforts to ensure the supply of emergency food locally.

FoodShare liaised with the City of Wodonga and Albury City Council's in emergency response management. FoodShare also supported the Alpine Shire and Alpine Health, Indigo Shire and Beechworth Health as well as Towong Shire and Rural City of Wangaratta through agency support to provide food for their community support programs.

### Additional Service Model

One of our responses to the increased demand from bushfires and COVID was to establish an additional service model: a Community Pantry. This model is a shift from dealing solely with agencies. It enables vulnerable people to order emergency food hampers directly from FoodShare, empowering us to get food to those in need more quickly, especially to those who may not know how to access food through other agencies. Growing the Community Pantry into a sustainable social enterprise is a key strategic focus for FoodShare.

Many stakeholders contributed to establishing this service. Read more on page 29.



# ALBURY WODONGA REGIONAL FOODSHARE ANNUAL REPORT 2020

## AN UNPARALLELED YEAR ... REPOSITIONING REGIONAL FOOD RELIEF

### Recognising Victoria's Regional Emergency Food Services

The Victorian Government was fast to realise that the pandemics presented particular challenges for regional communities, especially those already affected by drought and bushfires. This led to a suite of initiatives including the Community Pantry, to fortify regional emergency food services.

In June, we were grateful to receive \$150,000 via two grants in initial operational support funding from Regional Development Victoria and the Victorian Government/Bendigo Bank Bushfire Relief Fund. This was backed by a further \$200,000 from RDV to enable a better collaboration between Victoria's regional food shares and an evidence-based understanding of our impacts and operations. We very much look forward to continuing our involvement with the **Regional FoodShare Alliance** and collectively working towards outcomes that benefit local communities across the state.

By November, the Victorian Government recognised that more resourcing was required and announced \$5M funding to support the re-organisation of food relief statewide. The Department of Health and Human Services (DHHS) invited FoodShare to tender to become one of five Regional Food Hubs. In early 2021, we were notified our tender was successful. This outcome now sets the strategic focus for the organisation as we look to expand our operations and partnerships across the North East and ensure financial sustainability.

Importantly, the response from the Victorian Government reinforced the effectiveness of 'place-based' food relief services, i.e. that services work best when they are delivered by organisations embedded in their communities and able to understand and adapt to local circumstances. Of the community, for the community.

This was reflected in the Victorian Government's establishment of the state-wide **Regional Food Relief Network** – of which Albury Wodonga Regional FoodShare is a proud member. The Network enables collaborations between regional and national food relief providers, as well as raising the level of engagement with local governments and other community agencies. It is also represented on the Victorian Food Relief Taskforce, the new body charged with the oversight of food relief across Victoria.

FoodShare liaised with the City of Wodonga and the Albury City in relation to emergency response management. We also supported the Alpine Shire and Alpine Health, Indigo Shire and Beechworth Health, Towong Shire and Rural City of Wangaratta. We gave their local agencies food for their own community support programs.

The regional story is now being heard across the food relief landscape and regional FoodShares are now acknowledged as a critical feature of that landscape.

# ALBURY WODONGA REGIONAL FOODSHARE ANNUAL REPORT 2020

## SNAPSHOT

### WHY WE EXIST

We are the most effective and efficient operational model capable of supporting vulnerable people experiencing hardship in our area. We rescue nutritious food on behalf of agencies and redistribute it across NE Victoria, southern NSW and into the Riverina.

FoodShare is a dedicated, decentralised distribution/logistics centre working in two states to address food insecurity, simultaneously reducing food waste, reducing food miles, reducing emissions and increasing access to good quality nutritious food for people in financial stress or need.

### MAKING A DIFFERENCE

FoodShare rationalises the process in our catchment with substantial improvements to food rescue, sorting and distribution. We save food donors and food relief agencies time, money, resources and strain. As a grassroots-led organisation, we are able to service areas the metropolitan-based, state-funded charities are not currently able to access.

238 food relief agencies, schools and their clients accepted 1,123,043kg of food from 80 generous donors between January-December in 2020.

### GEOGRAPHICAL REACH – 150km RADIUS

We serve nine LGAs in southern NSW and NE Victoria: Albury, Wodonga, Indigo, Towong, Alpine, Wangaratta, Greater Hume, Moira and Federation.

### 2,900+ people across our nine local government areas run out of food on a weekly basis.

ABS Data Update 2018

### FOOD SHARING REACH

These organisations collaborate to share surplus.

- Bendigo FoodShare (280 km / 3 hours)
- Moira Health - Cobram (130 km / 1.5 hours)
- Shepparton FoodShare (172 km / 2 hours)

# ALBURY WODONGA REGIONAL FOODSHARE ANNUAL REPORT 2020

## SNAPSHOT

### CROSS BORDER SERVICE & NO WEEKEND ACCESS

Agencies in our region are usually open Monday-Friday. They are by far the biggest conduits for getting Foodshare food onto family's tables. They are not state or federally funded. They are not-for-profit.

*On weekends, there is no publicly recognised or well known mechanism to access emergency food relief.*

#### Victoria

Saint Stephens Uniting Church (Wodonga)

Wodonga and District Baptist Church (Wodonga)

New Life Chappel (Wodonga)

Birallee Park Neighbourhood House (Wodonga)

Open Door Neighbourhood House (Wangaratta)

Corryong FoodShare Service (Corryong)

#### NSW

Corowa Regional FoodBowl (Corowa)

### SERVICE EFFICIENCY

In 2020, \$213,000 of FoodShare expenditure provided over 2.2M meals at a value of \$7.88M. That is \$113,000 more cost, 740,000 more meals and \$2.63M more value than 2019.

Every dollar donated allows FoodShare to distribute \$42 worth of food to a family in need. That \$42 equates to the equivalent of 8 meals.

# ALBURY WODONGA REGIONAL FOODSHARE ANNUAL REPORT 2020

## SNAPSHOT

### WORKFORCE

2019 95% VOLUNTARY | 2020 95% VOLUNTARY



# ALBURY WODONGA REGIONAL FOODSHARE ANNUAL REPORT 2020

## SNAPSHOT



Students from Grace Christian College gathered goods as part of their Big Christmas Give and delivered 131 items to FoodShare.

### **FUNDING**

FoodShare is wholly funded by an irregular mix of Victorian state government support, individual private donations, corporate sponsorship funds, service club grants, philanthropic trust funds, local government grants and agency contributions.

As a small organisation, we raised more than \$507,000 in 2020, an astonishing testament from our community for the work we do in our community.

### **ELIGIBILITY**

What remains absent from this funding stream is access to federal and NSW government contributions to cover core operational costs.

In a significant change, FoodShare became eligible for funding from the state government (Victoria) during 2020. This follows years of advocating to politicians, cross-border commissioners, peak bodies, industry groups and government departments for not just Wodonga, but for all regional FoodShares to be acknowledged as essential services acknowledging the invaluable logistics role they fulfil as food rescue and redistribution hubs.

# ALBURY WODONGA REGIONAL FOODSHARE ANNUAL REPORT 2020

## SNAPSHOT

### VICTORIAN GOVERNMENT SUPPORT

In 2020 FoodShare received major financial support from the Andrews government through several sources. This support acknowledged the vital work done by FoodShare during the bushfires and COVID emergencies.

- Victorian Government/Bendigo Bank Bushfire Appeal Fund \$100,000
- Regional Development Victoria/Department of Jobs, Precincts and Regions \$50,000
- Regional Development Victoria/Department of Jobs, Precincts and Regions \$200,000
  - For investigation into the impacts and sustainability of regional FoodShares (Albury Wodonga, Bendigo, Warrnambool and Shepparton)

### FUNDRAISING

A dedicated coordinator has broadened our funding base by expanding income streams. A focused effort saw more than \$507,000 raised, a record amount for one year. We secured funding from various sources to purchase \$24,000 worth of food. More on page 30.



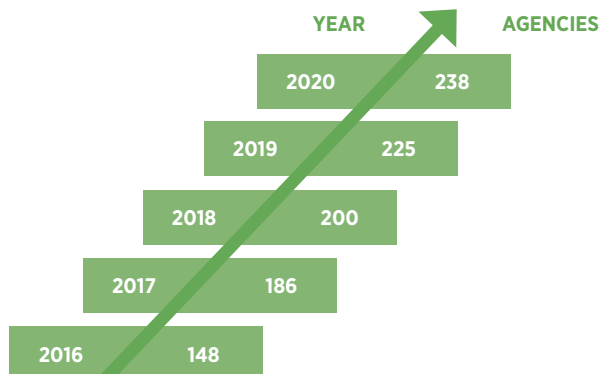
**“We get approximately 90% of our food from FoodShare and can’t thank them enough for being a huge part of our house and assisting us to make over 28,000 individually packaged meals to give away to the community for free!”**

Birallee Park Neighbourhood House.

# ALBURY WODONGA REGIONAL FOODSHARE ANNUAL REPORT 2020

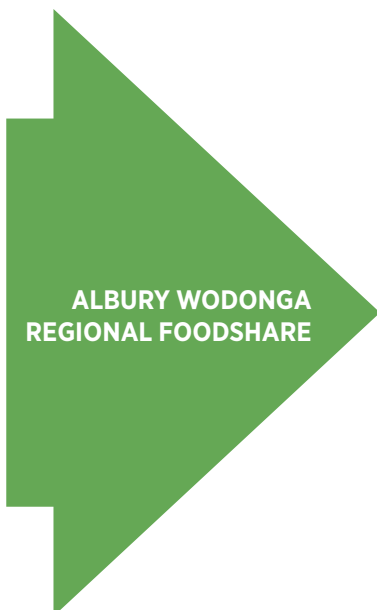
## SNAPSHOT

### INCREASED DEMAND & MORE AGENCIES



### INCREASED SUPPLY

Food donor partners have increased by 63% over the last three years. From 44 in 2017, to 80 in 2020. Locally rescued food volume has increased by 24% with a corresponding increase in meals since 2017.



- ALDI SUPERMARKETS (4) FULL RANGE**
- BIRALLEE NEIGHBOURHOOD HOUSE**
- COLES SUPERMARKETS (3) FULL RANGE**
- DANONE**
- FOODBANK VIC FULL RANGE**
- MARS PETCARE PET FOOD**
- RIVERINA DAIRY**
- SECOND BITE PACKAGED PRODUCTS**
- UNCLE TOBY'S PACKAGED FOODS**
- FARESHARE FROZEN MEALS**
- WOOLWORTHS DISTRIBUTION CENTRE (LOGIC) FULL RANGE**
- WOOLWORTHS SUPERMARKETS (7) FULL RANGE**

# ALBURY WODONGA REGIONAL FOODSHARE ANNUAL REPORT 2020

## SNAPSHOT

### REDUCTION IN LANDFILL

Between 2017-2021 we recorded a 41% kilogram jump in food avoiding landfill or use on farms: from 359,320kg to 761,533kg.

### 2014 - 2020 COMPARISON

YEAR	2014	2015	2016	2017	2018	2019	2020
Agencies and schools	110	120	148	186	200	225	238
Schools only	23	32	59	63	74	82	81
Locally rescued/donated (%)	65%	68%	72%	67%	55%	59%	68%
Locally rescued/donated (kgs)	422,500	500,480	648,000	359,320	369,800	445,500	761,533
Local equivalent meals (qty @ 500gm)	845,000	1,000,960	1,296,000	718,640	739,600	891,000	1,523,066
Local meal value (@ \$3.50* retail)	\$2.96M	\$3.5M	\$4.54M	\$2.52M	\$2.59M	\$3.19M	\$5.33M
Total rescued/donated/purchased (kgs)^	650,000	736,000	900,000	691,000	673,600	757,000	1,123,043
Total equivalent meals (qty @ 500gm)	1.3M	1.472M	1.8M	1.382M	1.346M	1.514M	2.246M
Total meal value (@ \$3.50* retail)	\$4.55M	\$5.15M	\$6.3M	\$4.84M	\$4.72M	\$5.25M	\$7.88M
Local donor partners (farmer/producer)					15	50	53
Total donor partners	32	37	44	44	44	72	80
Hampers							344
Demand f or hampers#							415%

\* \$3.50: The amount AWRFS ascertains as the 'cost' of buying and preparing a meal at home with food bought from a supermarket.

^ includes groceries, fruit, vegetables, chilled and frozen food.

# Growth from start-up in October to December

# ALBURY WODONGA REGIONAL FOODSHARE ANNUAL REPORT 2020

## MAJOR PARTNERS & STAKEHOLDERS

Our fundraising coordinator has grown FoodShare's profile since 2019. Thanks to this greater awareness and more mainstream fundraising activity and fruitful grant-writing we we have consolidated historical supporters and generated new partnerships large and small. We acknowledge our partners, stakeholders and in-kind supporters on these pages.

Firstly, we thank the farmers of Albury Wodonga and surrounding regions.



“Thanks to the farmers more food can be provided to anyone who is finding it hard to feed their family”. Hilda Calleja.

# ALBURY WODONGA REGIONAL FOODSHARE ANNUAL REPORT 2020

## MAJOR PARTNERS & STAKEHOLDERS

### ALBURY CITY

An allocation via Council's community and cultural grant recognised the growing demand for emergency food relief partially addressed through FoodShare's through FoodShare's Community Pantry (\$3,000).

### ASHBURY STUDIOS

This small local business sponsored a refresh of the website to enhance community engagement, and maintained that support throughout 2020.

### AUSSIE FARMERS FEDERATION

This Foundation provided \$30,000 to employ a staff member for one year (2018-2019) to research and establish a process rescuing fresh food at the production phase of the food chain from small and medium sized farms. In 2018 we secured 15 farmers. In 2020 it had grown to 50.

### AUSTRALIAN COMMUNITIES FOUNDATION

The money given by the ACF to purchase a dedicated delivery van to distribute hampers as part of the Community Pantry project was a critical milestone (\$25,000).



### AUSTRALIAN RAIL TRACK CORPORATION (ARTC)

Inland Rail provided timely funding to install an air conditioner in the new office space after the relocation.

### BORDER TRUST

Bushfire relief funding from this long term supporter enabled the purchase of additional food essentials to aid residents of the Towong and Alpine Shires (\$5,000).

# ALBURY WODONGA REGIONAL FOODSHARE ANNUAL REPORT 2020

## MAJOR PARTNERS & STAKEHOLDERS

### **COLLIER CHARITABLE FOUNDATION**

This Foundation has been a strong supporter during recent years. It allocated urgent funding to employ a part-time Volunteer and Administration Coordinator to to alleviate pressure on FoodShare's volunteer and part-time workforce. (\$40,000).

### **VICTORIAN STATE GOVERNMENT (WORKING FOR VICTORIA) ADMINISTERED BY COMMUNITY INFORMATION & SUPPORT VICTORIA (CISVIC)**

The level of need dramatically increased with the bushfire crisis and swelled again with COVID-19 on households. This stretched our resources to the limit, which was partially alleviated when CISVic funded a full time employee to coordinate the Community Pantry program for six months (\$40,000).

### **DEPARTMENT OF HEALTH AND HUMAN SERVICES (DHHS)**

FoodShare expanded its resources with community food relief funding received pay the salary of a full time warehouse operator, as well as enhance the Community Pantry program (\$75,000).

### **DON WATSON TRANSPORT**

With this loyal supporter, we increased our refrigeration capacity during the heightened demand period. Up to 20 pallets of frozen produce was stored on DWT's premises throughout the year, with FoodShare given 24 hour access to the storage facilities.

### **FINDEX**

This financial advisory and accounting service provides, through a pro-bono and subsidised arrangement, monthly reports, budget preparation, cash-flow monitoring and counsel.

### **FRANCIS TRANSPORT**

This consistently helpful company again provided low cost low cost shipment of approximately 20 deliveries of Uncle Toby's products (cereal, oatmeal, muesli bars etc). This stock is transported is transported each year from the factory in Wahgunyah to the FoodShare Warehouse in Wodonga.

### **FOODBANK VICTORIA (FBV)**

FBV helped establish the several FoodShares, thanks to the DHHS and the Sidney Myer Foundation. This infrastructure formation funding enabled the purchase of a freezer and other warehouse items. FoodShare acts as the local distribution point for five agencies registered with Foodbank. The relationship is interdependent and mutually supportive, sharing common goals.

# ALBURY WODONGA REGIONAL FOODSHARE ANNUAL REPORT 2020

## MAJOR PARTNERS & STAKEHOLDERS

### FOUNDATION FOR RURAL & REGIONAL RENEWAL (FRRR)

We accepted multiple grants from News Corp Bushfire Funding. These grants helped purchase a second freezer/cool room, increasing capacity to receive and store food (\$27,148).



Glenys Atkins, Simon Welsh, July Eddy, Peter Matthews, Beth Sainty-Gale and Julia Vesval at the launch of the new freezer.

### HERTZ TRUCK RENTAL

The Jacob family (Wodonga) offered free rental of its trucks and utility vehicles during 2020 in response to FoodShare's growing public profile as an essential service provider to struggling communities located a short drive from Albury Wodonga (approx. \$20,000).

### INTO OUR HANDS COMMUNITY FOUNDATION

In response to the bushfires and pandemic, with this donation, we were able to purchase additional meal staples. Food that was distributed via food hampers as part of the Community Pantry program (\$3,000).

### JWP ARCHITECTS

This local business came on board as a new corporate sponsor at a time when vital funding was required to search for a new home. That backing has impacted across two years.

### North East Local Learning and Employment Network (NELLEN)

FoodShare put out a call for a generous local business or donor to supply 50 new volunteer vests. CEO Bev Hoffman jumped to sponsor, saying "NELLEN understands the value of volunteering and gaining work experience in a variety of workplaces, and how volunteers contribute to the health of our community. We're so pleased to be able to support FoodShare's work".

# ALBURY WODONGA REGIONAL FOODSHARE ANNUAL REPORT 2020

## MAJOR PARTNERS & STAKEHOLDERS



Kristine Kemp and Dan Gibbs, NELLEEN

### **REGIONAL DEVELOPMENT VICTORIA (RDV)**

RDV provided \$50k toward operational funding to enable us to support increased demand during the bushfires. The Bushfire Appeal Fund, instigated by the Victorian Government and Bendigo Bank, gave us the \$100k that went to the community pantry

### **RE ROSS TRUST**

We are grateful to project officers at this philanthropic for recommending funds be allocated across two years (2018-20) to pay the salary of a fundraising/marketing coordinator at 0.2EFT. That coordinator has been a blessing to FoodShare. We recognise its importance to FoodShare's long term viability. The role sources funding, deepens relationships, and raises awareness. It functions to fund its own position, alongside projects, infrastructure, personnel and office equipment (\$60,000).

# ALBURY WODONGA REGIONAL FOODSHARE ANNUAL REPORT 2020

## MAJOR PARTNERS & STAKEHOLDERS

### RIVALEA COROWA

In 2018 we began a financial and in-kind sponsorship with Rivalea. The partnership has grown as the organisations discover closer strategic interests, namely due to FoodShare's reach into Federation Shire and across southern NSW and NE Victoria. In 2019 Rivalea donated to grow Corowa's 'foodbowl' project, a joint initiative of the Amaranth Foundation and FoodShare, supported by Federation Council (\$25,000).



Corowa Food Bowl launch



### ROTARY CLUB OF ALBURY WODONGA SUNRISE

We are so grateful for the generous and thoughtful gift of fuel vouchers. Two vans are driven constantly across both sides of the border delivering emergency food and picking up supplies from donors (\$2,000).



Rotary Club of Albury Wodonga Sunrise gave \$2000 in fuel vouchers.

# ALBURY WODONGA REGIONAL FOODSHARE ANNUAL REPORT 2020

## MAJOR PARTNERS & STAKEHOLDERS

### ROTARY CLUB OF BELVOIR

This generous donation was accepted to support the operational side of providing emergency food relief (\$17,000).

### SAILORS, SOLDIERS AND AIRMENS CLUB ALBURY (SS&A)

Another consistent local partnership that began with a three year sponsorship from 2015-2017, then again from 2018-2020. The club contributed \$20,000 p/a to operational costs, and a separate donation of \$20,000 towards the purchase of a new refrigerated vehicle (\$40,000).

### 7-ELEVEN AND SECOND BITE

When trying to get the Community Pantry initiative off the ground we had limited resources yet needed to fund the purchase of additional food supplies to meet the increase in local demand. In stepped the Good Cause partnership, with a FEEDmore grant to help get us on the road (\$5,000).



### WODONGA INSTITUTE OF TAFE

Our most critical alliance between 2013-2020. We are continuing to work as long term collaborators, focussing on a joint project to develop a new warehouse with training facilities. If the project is realised, FoodShare is poised to provide social and educational dividends on Wodonga TAFE's land.

# ALBURY WODONGA REGIONAL FOODSHARE ANNUAL REPORT 2020

## AMAZING PEOPLE

### THE TEAM

It is important to remember that the foundation of FoodShare's achievements this year is a relatively small team of staff and volunteers. On any given day, you can find around 20 people working at our warehouse.

The strain on our people from the sheer scale of challenges thrown at this year must be recognised. Our team was exhausted by the bushfires in January, where we operated for 27 days straight and doubled our volunteer hours.

When COVID struck – requiring rapid and significant changes to our work, as well as further increases in demand for food – everyone responded magnificently. Along the way, we also undertook a warehouse relocation. A further complication in a complex situation, but one that now sees us better placed to serve our community and deal with the long-tail effects from both the bushfire and COVID crises.

Through this all, we were ably led by our Manager, Peter Matthews. He tirelessly held our team together, while always being driven by his core motivation to get food relief to the people in our community who need it.

### VOLUNTEERS

It is precisely because of community support that FoodShare can provide its services to the community. Over 100 volunteers contribute to all areas of our business from running the warehouse, driving the van to collect and distribute food supplies, assembling orders, administration, data base management, bookkeeping, fundraising, work safety and stock management.

We thrive because of local generosity, capacity and skillsets. Our volunteers are the reason we are an efficient, professional service that punches far above its weight.

The collective effort of volunteers and local community donations ensure that FoodShare has a real impact on hunger and disadvantage across our local communities on both sides of the Murray River, and into the high country.

As an organisation, and a community, we owe much to our volunteers.

In May, we were very proud to see our volunteers celebrated with the City of Wodonga Award for Volunteer Team of the Year.

**“It's a massive team effort and a well-deserved award for our volunteers.”**

Peter Matthews, FoodShare Manager

# ALBURY WODONGA REGIONAL FOODSHARE ANNUAL REPORT 2020

## AMAZING PEOPLE

### VOLUNTEERS



Gary Mawby was also honoured at the Volunteer Awards for his work in the Wodonga community, winning The Bryan Watson Individual Volunteer of the Year Award.

**“I started volunteering in 2011 as a way of giving something back to the community and for the opportunities that volunteering provides.”**

Gary Mawby

# ALBURY WODONGA REGIONAL FOODSHARE ANNUAL REPORT 2020

## AMAZING PEOPLE

### STAFF

As logistical operations grew in 2020, so too did staff numbers. Thanks to Regional Development Victoria and Working for Victoria our administration team grew to four paid personnel.

With the support of Regional Development Victoria and the Department of Health & Human Services, the administration team will expand in 2021 to include another full-time staff member to coordinate FoodShare's warehouse operations.

These positions have (and will have) a significant impact on the organisation. This funding has enabled FoodShare to:

- increase income streams
- develop new community partnerships
- increase the awareness of its services in the community
- attract new and retain existing volunteers as well as receive recognition amongst the community for the valuable services they provide
- provide additional support for over 100 volunteers as well as 225 regional agencies, educational institutions and community groups
- source regular food donations from new suppliers
- significantly reduce food wastage
- enhance its operations to provide services directly to those experiencing financial hardship
- work towards achieving financial sustainability through piloting operational models



# ALBURY WODONGA REGIONAL FOODSHARE ANNUAL REPORT 2020

## AMAZING PEOPLE

### BOARD

After a year of substantial renewal in 2019, our Board remained comparatively stable over 2020 as we focussed on the strategic, financial and governance challenges facing us. Chair Richard Robertson resigned from the Board in February, and we thank him for his contributions over his tenure, particularly with his work maintaining connections with Wodonga TAFE, researching and securing a new warehouse.

Richard remains closely involved with FoodShare through his community work with Mirambeena Community Centre in Albury NSW, Uniting and Wodonga Institute of TAFE (Victoria). Later in February, we welcomed Kath Dalton.

We acknowledge our colleagues for their efforts and resilience over a difficult – but ultimately rewarding – 12 months.

Stephen Carroll, Michael Curtin (Deputy Chair), Kath Dalton (joined February), Dianne Glen, Jodie Kensington, Richard Robertson (Chair resigned February), Kevin Rocks (Treasurer), Simon Welsh (Chair from February) and Kate Wheller (April).

More details regarding Board members can be found on our website.



**“Thank you for all you do for our community!”**

Wodonga Local Food Network

# ALBURY WODONGA REGIONAL FOODSHARE ANNUAL REPORT 2020

## COMMUNITY PANTRY

In response to the summer bushfires and the Coronavirus pandemic, FoodShare introduced a Community Pantry program to provide food hampers directly to people experiencing financial hardship. This service was in addition to our general food distribution program to a network of over 200 welfare agencies, schools and neighbourhood centres.

With the evolving restrictions and impacts of COVID-19, there was an urgent need to develop the service to directly support those who were seeking emergency food relief, many of whom were requiring support for the first time and didn't have a connection to any service provider.

The acute need was exacerbated because several regular agencies that offered food relief across our local communities were forced to temporarily close due to varying health risk factors associated with COVID-19 on their volunteer workforce.

The introduction of the Community Pantry reflected the immediate needs of the community and evolved in response to demands for fresh fruit and vegetables, dairy items, fresh and frozen protein, non-perishable food and household items.

As demand continued to rapidly rise during the months of April and May, FoodShare secured pivotal funding for a coordinator to administer the program, and to lease a second warehouse dedicated to supporting its goals. This enabled us to run the pantry more efficiently, to provide volunteers with the necessary space to pack hampers in line with new COVID safety protocol, and to store additional food supplies to meet a demand that was not slowing down.



Deanne Day (FoodShare Volunteer) and Nicole Eirth (FoodShare Community Pantry Coordinator)

**“I don’t know what I would have done. The kids and I would have been left hungry if you hadn’t delivered this amazing amount of food, we are very grateful.”**

Helen, FoodShare Hamper Recipient

# ALBURY WODONGA REGIONAL FOODSHARE ANNUAL REPORT 2020

## FUNDRAISING

The residents of Albury Wodonga and surrounds came together at the start of the year, galvanized against the summer bushfires. Their compassion meant donations of food essentials were beyond the capacity of FoodShare's sizable warehouse. This promoted the introduction of FoodShare's first online **Give Now** campaign which encouraged regular and one-off cash donations to support FoodShare in delivering ongoing emergency food relief to surrounding bushfire affected areas.

With FoodShare unable to host any events in 2020 due to COVID-19 restrictions, fundraising efforts for the remainder of the year focused on expanding income streams online and through grant opportunities.

Over \$320,000 was raised across 2020, which included \$24,000 in dedicated funding to purchase additional food supplies from various sources as part of FoodShare's new Community Pantry program. Other projects funded through grants included a second freezer/cool room for extra capacity to receive and store food, as well as a new delivery van tasked to distribute hampers for the Pantry. Timely funding was also received in summer to install an air conditioner in the administration office.

With the strain being felt on resources and the volunteer team, FoodShare's administration staff increased through funding sources to recruit three additional staff members. The financial stimulus bolstered operations and should ultimately inform transitioning to a business model geared to financial sustainability.



A grant from Inland Rail (ARTC) enabled a split system air conditioner to be installed in the warehouse office.

## GOVERNANCE

A key focus for the Board was governance development. These efforts have been were by our Governance Sub-Committee, including Stephen Carroll, Kevin Rock and Di Glenn.

In 2020, the Directors commenced a review of the organisation's governance structures and processes to prepare for a more sustainable future. The Board engaged Alison Lee (Associate Partner Risk Consulting) at Crowe Australasia to assist us with this work.

Also completed this year, following our move to the new warehouse, was a detailed Workplace Safety Audit. Recommendations from this report have been fully implemented.

In the year ahead, the Directors will focus on the implementation of governance review outcomes, including renewal of governance policies/processes and the establishment of a Risk Management Committee. We will also work be working on the development of a new strategic plan in light of our appointment as a Regional Food Hub.

**FINANCE**

**Albury Wodonga Regional Foodshare**

ABN 89 154 710 586

**Financial Statements**

For the year ended 31 December 2020

## Contents

	<b>Page</b>
Balance Sheet	34
Statement of Changes in Equity	35
Profit and Loss Statement	36
Notes to the Financial Statements	37
Declaration by Treasurer	40
Independent Review Report	41

# ALBURY WODONGA REGIONAL FOODSHARE ANNUAL REPORT 2020

## Albury Wodonga Regional Foodshare Balance Sheet as at 31 December 2020

	2020 \$	2019 \$
<b>Current Assets</b>		
Cash and cash equivalents	359,603	122,342
Trade Debtors	14,974	41,618
GST Receivable	-	-
<b>Total Current Assets</b>	<b>374,577</b>	<b>163,960</b>
<b>Non-Current Assets</b>		
Property Plant & Equipment	79,043	64,379
<b>Total Non-Current Assets</b>	<b>79,043</b>	<b>64,379</b>
<b>Total Assets</b>	<b>453,620</b>	<b>228,339</b>
<b>Current Liabilities</b>		
Trade Creditors	9,578	6220
GST Payable	3,748	452
Superannuation Payable	4,536	1,757
Salary Sacrifice	350	-
<b>Total Liabilities</b>	<b>18,212</b>	<b>8,429</b>
<b>Net Assets</b>	<b>435,408</b>	<b>219,910</b>
<b>Equity</b>		
Retained Earnings	219,910	121,436
Profit /(loss) for the year	215,498	98,474
<b>Total Equity</b>	<b>435,408</b>	<b>219,910</b>

# ALBURY WODONGA REGIONAL FOODSHARE ANNUAL REPORT 2020

## Albury Wodonga Regional Foodshare Statement of Changes in Equity for the year ended 31 December 2020

	Retained Earnings \$	Total Equity \$
<b>Balance at 1 January 2019</b>	121,436	121,436
<b>Total comprehensive income</b>		
Profit/(loss) for the year	98,474	98,474
<b>Balance at 31 December 2019</b>	<b>219,910</b>	<b>219,910</b>

	Retained Earnings \$	Total Equity \$
<b>Balance at 1 January 2020</b>	219,910	219,910
<b>Total comprehensive income</b>		
Profit/(loss) for the year	215,498	215,498
<b>Balance at 31 December 2020</b>	<b>435,408</b>	<b>435,408</b>

The statement of changes in equity should be read in conjunction with the notes to and forming part of the financial statements

# ALBURY WODONGA REGIONAL FOODSHARE ANNUAL REPORT 2020

## Albury Wodonga Regional Foodshare Profit & Loss Statement for the year ended 31 December 2020

	2020 \$	2019 \$
<b>Revenue</b>		
Interest	179	505
Grants	263,148	166,750
Registered Club Grants	20,000	20,000
Work Place Giving	35	385
Fundraising/Sponsorship	208,193	60,670
Membership	4,075	33,445
Corporate Sponsorship	25,000	17,500
COVID income	37,479	-
CISVIC	15,404	-
<b>Total Revenue</b>	<b>573,513</b>	<b>299,255</b>
<b>Expenses</b>		
Employee costs	183,042	105,078
Operating costs	163,876	83,921
Total food costs	11,097	11,782
<b>Total Expenses</b>	<b>358,015</b>	<b>200,781</b>
<b>Net Operating Profit/(loss)</b>	<b>215,498</b>	<b>98,474</b>

## **Albury Wodonga Regional Foodshare Notes to and forming part of the financial statements for the year ended 31 December 2020**

### **1. Statement of significant accounting policies**

Albury Wodonga Regional Foodshare ("The Company") is a company domiciled in Australia.

#### **(a) Statement of compliance**

In the opinion of the Board, Albury Wodonga Regional Foodshare is not a reporting entity. The financial reports of the Company have been drawn up as a special purpose financial report to meet the reporting needs of the Company and to satisfy the requirements the *Australian Charities and Not-for-profits Commission Act 2012*.

The financial report has been prepared on an accruals basis in accordance with the historical cost convention and, except where stated, does not take into account changing money values or fair value of assets.

The accounting policies which have been adopted are as set out below.

#### ***Not-for-profit status***

Under the Australian interpretations of the International Financial Reporting Standards (AIFRS), there are requirements that apply specifically to not-for-profit entities that are not consistent with International Financial Reporting Standards (IFRS) requirements. The Company has analysed its purpose, objectives and operating philosophy and determined that it does not have profit generation as a prime objective. Consequently where appropriate the Company has elected to apply options and exemptions within AIFRS that are applicable to not-for-profit entities.

# ALBURY WODONGA REGIONAL FOODSHARE ANNUAL REPORT 2020

## Albury Wodonga Regional Foodshare Notes to and forming part of the financial statements for the year ended 31 December 2020 (continued)

### 1. Statement of significant accounting policies (continued)

#### (b) Revenue recognition

Revenue is measured at the fair value of the consideration received or receivable.

Income is recognised when the Company obtains control of the funds or the right to receive the funds, it is probable that the economic benefits comprising the funds will flow to the Company and the amount of the funds can be measured reliably.

#### *Interest Revenue*

Interest revenue is recognised when it is received.

#### (c) Tax

Revenues, expenses and assets are recognised net of the amount of GST, except where the amount of GST incurred is not recoverable from the Australian Tax Office. In these circumstances the GST is recognised as part of the cost of acquisition of the asset or as part of an item of the expense.

Receivables and payables in the Statement of Financial Position are shown inclusive of GST.

#### d) Going Concern Basis of Preparation

The Company has reported a profit of \$215,498 for the period ended 31 December 2020 (2019: Profit of \$98,474). Net current assets are \$356,365. (2019: \$155,531).

The financial report has been prepared on a going concern basis which contemplates continuity of normal business activities and the realisation of assets and settlement of liabilities in the ordinary course of business.

The Company's ability to remain a going concern and to discharge its liabilities in the ordinary course of business is dependent upon the continuing support of its members, and the generation of positive net cash flows from operating activities. The Board have reviewed the budgeted trading position of the Company including an analysis of income and expenditure items together with a cashflow analysis and are satisfied that it is appropriate to prepare the financial report on the going concern basis.

## **Albury Wodonga Regional Foodshare Notes to and forming part of the financial statements for the year ended 31 December 2020 (continued)**

### **2. Financial instruments**

The financial assets and liabilities of the Company have been disclosed at their carrying amount. At 31 December 2020 this approximated their fair values.

### **3. Subsequent events**

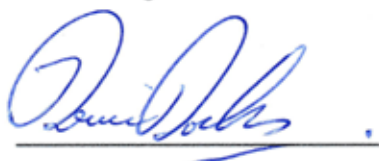
There has not arisen in the interval between the end of the financial year and the date of this report any item, transaction or event of a material and unusual nature likely to affect significantly the operations of the Company, the results of those operations, or the state of affairs of the Company in subsequent financial years.

## Albury Wodonga Regional Foodshare Declaration by Treasurer

### Declared Opinion

I, the Treasurer of Albury Wodonga Regional Foodshare declare that, in my opinion:

1. The attached special purpose financial statements for Albury Wodonga Regional Foodshare are properly drawn up so as to present fairly the financial position of Albury Wodonga Regional Foodshare as at 31 December 2020 and the results of its operations for the year then ended, in accordance with the accounting policies applied as outlined in Note 1 to the financial report; and
2. At the date of this statement, there are reasonable grounds to believe that Albury Wodonga Regional Foodshare will be able to pay its debts as and when they fall due.



Kevin Rocks  
*Treasurer*

Dated this 24 day of May 2021

# ALBURY WODONGA REGIONAL FOODSHARE ANNUAL REPORT 2020



**Crowe Albury**  
ABN 16 673 023 918  
Member Crowe International  
Audit and Assurance Services  
491 Smollett Street  
Albury NSW 2640 Australia  
PO Box 500  
Albury NSW 2640 Australia  
Tel 02 6021 1111  
Fax 02 6041 1892  
[www.crowe.com.au](http://www.crowe.com.au)

## **INDEPENDENT REVIEWERS' REPORT TO THE MEMBERS OF ALBURY WODONGA REGIONAL FOODSHARE**

We have reviewed the financial statements, being special purpose financial statements, of Albury Wodonga Regional Foodshare (the "Company"), which comprises the balance sheet as at 31 December 2020, the profit and loss statement, and statement of changes in equity for the year then ended, a summary of significant accounting policies and other explanatory notes and the Treasurer declaration.

### **Responsibility of the Directors for the financial statements**

The Board is responsible for the preparation and fair presentation of the financial statements and has determined that the accounting policies described in Note 1 to the financial statements, are appropriate to meet the requirements of the *Corporations Act 2001* and the *Australian Charities and Not-for-profits Commission Act 2012* and are appropriate to meet the needs of the members. The Board's responsibility also includes designing, implementing and maintaining internal controls relevant to the preparation and fair presentation of the financial statements that are free from material misstatement, whether due to fraud or error; selecting and applying appropriate accounting policies; and making accounting estimates that are reasonable in the circumstances.

### **Auditor's responsibility**

Our responsibility is to express an opinion on the financial statements based on our review. No opinion is expressed as to whether the accounting policies used, as described in Note 1, are appropriate to meet the needs of members. We conducted our review in accordance with Australian Auditing Standards. These Auditing Standards require that we comply with relevant ethical requirements relating to review engagements and plan and perform the review to obtain assurance whether the financial statements are free from material misstatement.

A review involves performing procedures to obtain review evidence about the amounts and disclosures in the financial statements. The procedures selected depend on the Auditor's judgement, including the assessment of the risks of material misstatement of the financial statements, whether due to fraud or error. In making those risk assessments, the Auditor considers internal controls relevant to the entity's preparation and fair presentation of the financial statements in order to design review procedures that are appropriate in the circumstances, but not for the purpose of expressing an opinion on the effectiveness of the entity's internal controls. These procedures have been undertaken to form an opinion whether, in all material respects, the financial statements are presented fairly in accordance with the basis of accounting described in Note 1 to the financial statements so as to present a view

# ALBURY WODONGA REGIONAL FOODSHARE ANNUAL REPORT 2020



which is consistent with our understanding of the Company's financial position, and of its performance.

We believe that the review evidence we have obtained is sufficient and appropriate to provide a basis for our review opinion.

## QUALIFICATION

It is not practicable for the Company to establish accounting control over all sources of income prior to the receipt of these funds by the Company. Accordingly, it is not possible for our examination to include procedures, which extend beyond the amounts of such income, recorded in the accounting records of the Company.

## QUALIFIED REVIEW OPINION

Based on our review, which is not an audit, we have not become aware of any matter that makes us believe that except for the impact of the above qualification, if any, the financial report of Albury Wodonga Regional Foodshare is not in accordance with the *Corporations Act 2001* and the *Australian Charities and Not-for-profits Commission Act 2012*, including:

- (a) presenting fairly a view of the Company's financial position as at 31 December 2020 and of its performance for the year ended on that date; and
- (b) complying with Australian Accounting Standards to the extent described in Note 1.

## Emphasis of matter – basis of accounting and restriction on distribution

Without modifying our opinion, we draw attention to Note 1 to the financial statements, which describes the basis of accounting. The financial statements have been prepared for distribution to the members of the Company and for the purpose of fulfilling the Company's financial reporting obligations under the *Corporations Act 2001* and the *Australian Charities and Not-for-profits Commission Act 2012*. As a result, the financial statements may not be suitable for another purpose.

A handwritten signature in blue ink, appearing to read "Bradley D Bohun".

**CROWE ALBURY**

A handwritten signature in blue ink, appearing to read "Bradley D Bohun".

**BRADLEY D BOHUN**  
Partner

Albury  
Dated this 24 day of May 2021

## VISION, MISSION, VALUES, GOALS

### VISION

Our vision is to provide an efficient, sustainable and collaborative approach to addressing food insecurity among people experiencing hardship in our region. We see our organisation as providing the 'logistics solution to local hunger'.

### MISSION

Our mission is to work together to maximise the volume and nutritional quality of food for people in need and create pathways out of poverty through training, education, employment and volunteer opportunities.

### VALUES

#### Social Justice

We believe all people have the right to adequate amounts of nutritious, culturally appropriate food without the need for emergency relief.

#### Empowerment

We build on people's strength and enable them to speak and act for themselves and create their own ways out of poverty

#### Efficiency

We make the most of our time, money, food or resources and reduce waste with creative solutions.

#### Sustainable

We minimise the carbon footprint of food production, transport, manufacture, storage and distribution.

#### Collaboration

We seek and achieve successful strategic partnerships to maximise our common goals.

#### Innovation

We think and work strategically to innovatively solve problems and strive to address our purpose. Health We believe highly nutritious food is a must for everyone - we seek it, provide it and educate about it.

#### Diversity

We leverage the strengths offered by diversity and see this as an opportunity for success

#### Integrity

We are honest, open and responsible in all our interactions

**Albury Wodonga Regional FoodShare**

**1/10 Stead St, West Wodonga VIC 3690**

**PO Box 393, Wodonga Vic 3689**

**[www.foodshare.org.au](http://www.foodshare.org.au) | [info@foodshare.org.au](mailto:info@foodshare.org.au) | 02 6059 5555**